

Falcon

Scale Models



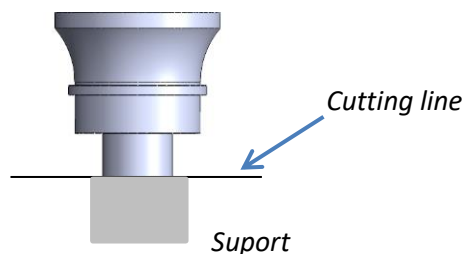
Honda RA272 – fuel system set (Tamiya 20043)

Catalog no.: FSM C7

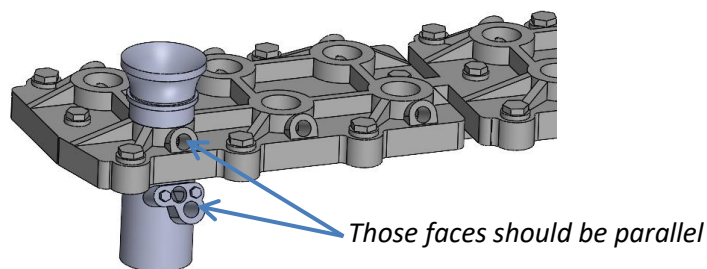
Installation guide

Cut all parts with sharp cutters like Tamiya 74123. Do not break off parts.

1. Cut off air funnels.



2. Glue air funnels to the top of the engine cover. Apply small amount of CA glue in order not to fill holes used for wire installation (see step 4).
3. Cut off fuel injectors and glue them to the bottom of the engine cover. Position them as shown below.

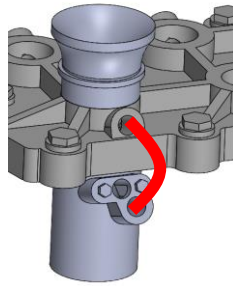


4. Cut brown wire into 8mm sections. Connect the bottom hole of the fuel injector with the hole in the cover with the cut wire. The wire can be installed without glue.

TIP:

- In case you need to glue it use Micro Kristal Klear glue which can be easily removed when applied too much.
- In case wire do not enters the hole check its end and remove unclean cut. If needed to correct hole size use 0.2-0.25mm drill. Remember to drill at the same angle as the hole's axis.

Drill with caution not to break fragile sections.



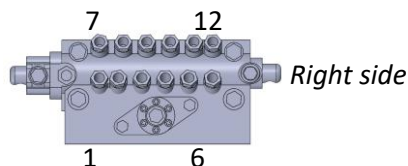
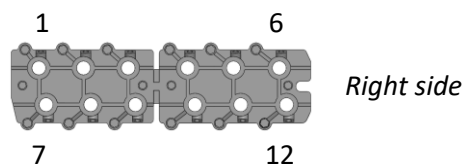
5. In part D5 sand down the installation area of D15 part for about 0.5 – 0.8mm



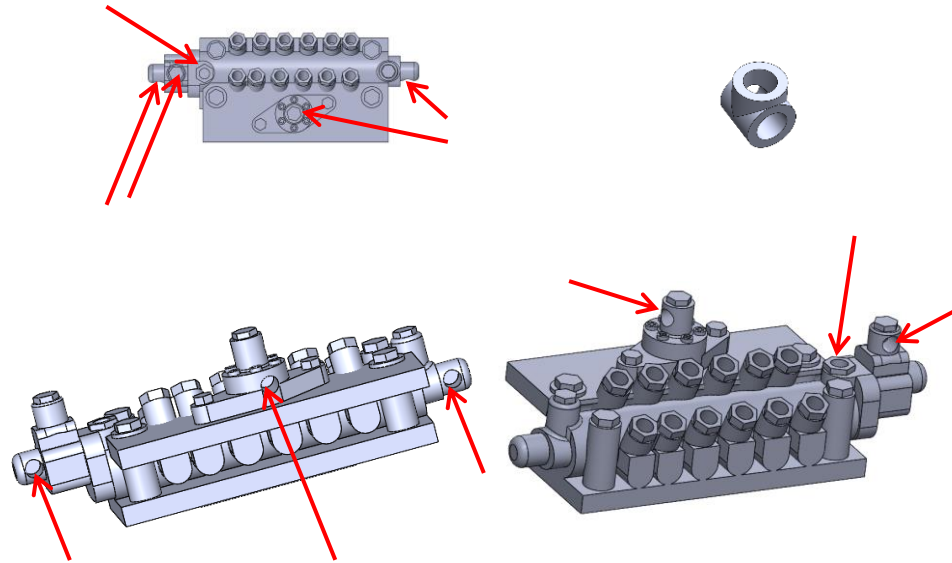
6. Cut transparent wire and insert it the top hole of fuel injector (one can use CA glue). The other end insert into the fuel pump (dip toothpick in CA glue and apply small amount on the end of the wire and insert it into the pump).

Wires from the front of the engine (1-6) should pass between the air funnels. It is advised to cut wires longer and cut them to the desired length during installation at the fuel pump. Suggested initial length for connections: 1-3 length of 30mm, 4-6 length of 35mm, 7-9 length of 15mm, 10-12 length of 22mm.

TIP: One can create your own length template and adjust length of wires as desired due to fact that fuel wires were placed differently between air funnels according to the available documentation. Do the dry fit of elements before applying CA glue as it can plug installation holes.



7. Use black wire and the connector to simulate additional wiring of the fuel pump (use photos from below as references). Installation holes are marked with red arrows. Due to the fact that wires are connected to the pump on one side and are free on the other, hide free ends beneath the engine or between engine and driver cabin.

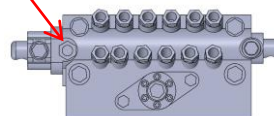


Connector included
in the FSM7 kit



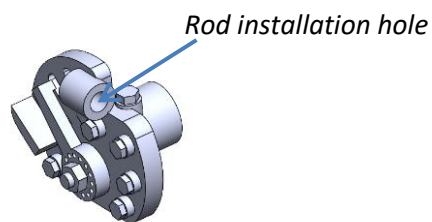
Connector wiring steps:


- pass wire through the connector,
- glue on end to the fuel pump,
- glue second wire to the top of the connector,
- glue the second wire to the fuel pump

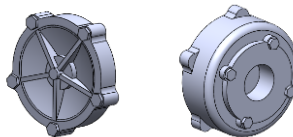




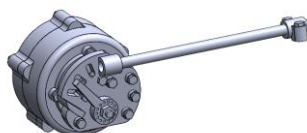
8. Cut the metal rod to 7.5 mm and sand down both ends to make them smooth.
9. Install the rod to the throttle using CA glue.



10. Install the mounting element  on the rod. Secure the rod's free end with a PVA glue not to drop mounting element. Do not use CA glue as during final assembly length/position adjustments will be required.



11. Glue parts together using CA glue.
12. Using Micro Kristal Klear or similar, glue parts from point 10 and 11 together and then to the D5. Remember to make a dry fit and if needed shorten the metal rod. See references below. Using mentioned glue will give time to position parts and in case of one will apply too much glue it can be easily removed without damaging painted elements.



Reference photos

